

SRF

Self-Regulating Heating Cable
Freeze Protection for Pipework

FINE SRF Series for freeze protection generates heat by a material of semi-conductor, showing a characteristic of PTC (Positive Temperature Coefficient).

PTC is characterized by the power output of heating cable adjusted to compensate for variations in ambient temperature.

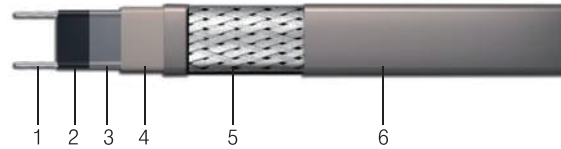
It produces more heat if the temperature drops and less heat if the temperature rises.

SRF Series is a self-regulating cable heater, working on the PTC principle, requiring low electrical consumption.

SRF Series is most suitable for protection of plumbs and pipes from freezing in winter.

Product construction

1. Copper bus wire (16AWG)
2. Self-regulating conductive core
3. Inner adhesive jacket
4. Modified polyolefin jacket
5. Tinned-copper braid
6. Modified polyolefin outer jacket (-CR)
Fluoropolymer outer jacket (-CT)



Features of FINE SRF Series

1. Long life time (semi-permanent)

SRF Series is post-treated under elevated temperature in annealing process to give its stability in long-term operation without losing heat output.

2. Low energy consumption

The electrical consumption of **SRF Series** is low due to its unique PTC property.

3. Excellent heat resistance

SRF Series is treated by irradiation crosslinking reaction, providing the same level of thermosetting property as XLPE.

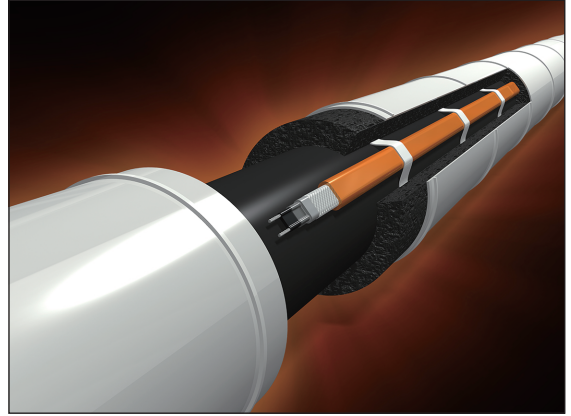
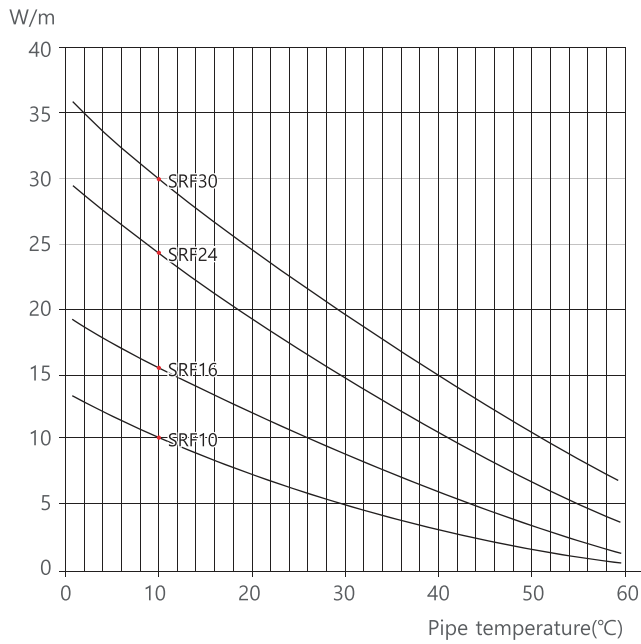
4. Cut to length

The heat generator of **SRF Series** is composed of the infinite parallel connection of carbon particles, allowing it to be cut to the exact length required.

Product characteristics and design information

Nominal power output	10,16,24,30 W/M	at 10°C
Max. maintenance temperature	65°C	
Max. intermittent exposure temperature	85°C	T-rating : T6
Service voltage	SRF1	100 – 130 Vac
	SRF2	200 – 254 Vac

Power output graph



Max. length (m) vs. Circuit breaker size

	Start-up temperature	110V				220V			
		15A	20A	30A	40A	15A	20A	30A	40A
SRF10-CR/CT	10°C	105	-	-	-	205	-	-	-
	0°C	90	105	-	-	175	205	-	-
	-20°C	65	90	105	-	125	180	205	-
	-40°C	50	65	85	-	95	130	170	-
SRF16-CR/CT	10°C	70	80	-	-	130	155	-	-
	0°C	60	70	80	-	110	140	155	-
	-20°C	50	60	70	80	90	120	140	155
	-40°C	40	45	65	75	70	90	135	150
SRF24-CR/CT	10°C	60	70	75	-	110	135	150	-
	0°C	50	60	70	75	90	120	135	150
	-20°C	35	45	60	70	65	90	120	135
	-40°C	30	40	50	60	55	75	100	115
SRF30-CR/CT	10°C	40	50	60	-	80	95	120	-
	0°C	35	45	50	60	70	85	100	120
	-20°C	30	35	45	55	55	70	90	110
	-40°C	25	30	40	50	45	60	80	100

Certificste



Ordinary Locations
Hazardous (Classified) Locations
Class I, Div. 2, Groups A,B,C,D

Nemko 03ATEX1279X

Ex e II T6
09-AV2BO-0164